



📍 3 The Street, Brinkworth, Chippenham, SN15 5AB

📄 Auction Guide £140,000

- For Sale by Online Auction
- Thursday 12th February 2026
- Lot 02
- Guide Price £140,000+

🏠 Freehold

📊 EPC Rating E



LOT 02
FOR SALE BY ONLINE AUCTION
THURSDAY 12th FEBRUARY 2026
GUIDE PRICE £140,000+

3 Bedroom semi-detached house in a semi-rural location on a good size plot backing on to open countryside. The property is in need of updating. Potential to extend to the rear (subject to planning).

The accommodation comprises on the ground floor; entrance hall, living room, kitchen/dining room with door to the garden and a bathroom. On the first floor; landing and 3 bedrooms. The property has double glazing and electric heating.

To the front is a large gravelled driveway with parking for multiple vehicles. A gated side access leads to the long enclosed rear garden which is laid mainly to lawn with greenhouse.

what3words:///downcast.scanty.kitchens

Situation & Description

3 Bedroom semi-detached house in a semi-rural location on a good size plot backing on to open countryside. The property is in need of updating. Potential to extend to the rear (subject to planning).

Situated in a village position only a short walk from local amenities. Brinkworth which is reputedly the longest village in England, has a thriving community with an excellent Primary School and village pub/restaurant. The nearby towns of Malmesbury and Royal Wootton Bassett provide shopping, schooling and leisure amenities.

J16 of the M4 is about 6 miles away giving fast access to London and/or the South West. There are mainline rail stations at Chippenham and Swindon.

The accommodation comprises on the ground floor; entrance hall, living room, kitchen/dining room with door to the garden and a bathroom. On the first floor; landing and 3 bedrooms. The property has double glazing and electric heating.

To the front is a large gravelled driveway with parking for multiple vehicles. A gated side access leads to the long enclosed rear garden which is laid mainly to lawn with greenhouse.

Viewings

To arrange a viewing, contact: Malmesbury Office on 016666 829292.

There will be numerous pre-arranged open house viewing slots lasting for 30 minutes and you can book in by contacting the Auctioneers.

If you have any concerns with viewings, please contact the relevant Strakers office and we would be happy to discuss them with you and hopefully put you at ease.

Online Auction

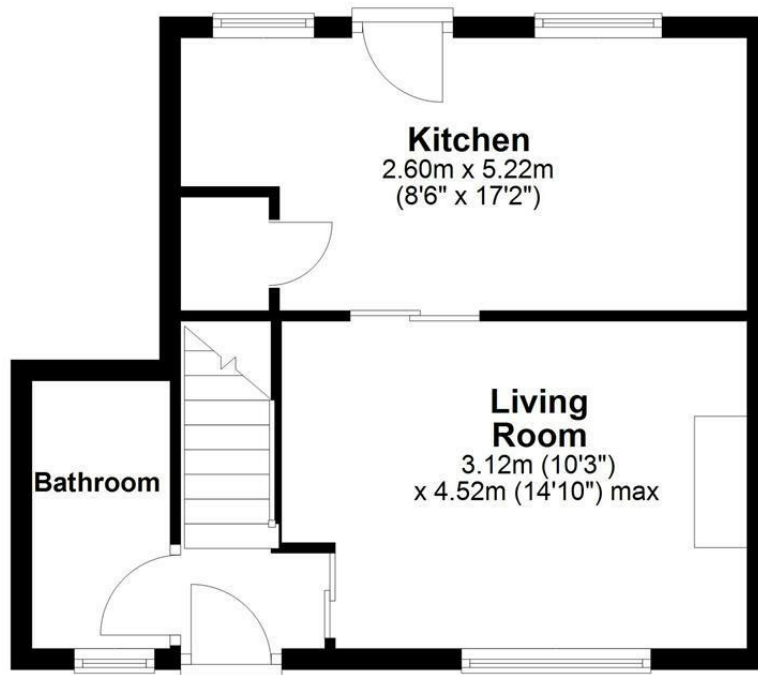
In order to bid at Strakers Online Auctions, you will first need to create an account by providing your contact details. You will be asked to read and accept our Online Auction Terms and Conditions. In order to bid online, you will be required to register a credit or debit card for the bidder security deposit. Strakers are required by law to carry out an online anti-money laundering check on all persons wishing to bid. In general terms, you are strongly advised to view the property and take professional advice as to its condition and suitability.

When the auction opens at 8am the day of the auction, you will be able to place bids in line with the pre-determined bid increment levels, using the bid increase (+) and decrease (-) buttons provided. It is recommended you check your web browser will allow you to bid in good time as some browsers' security can block the ability to bid. We recommend using Google Chrome when possible.



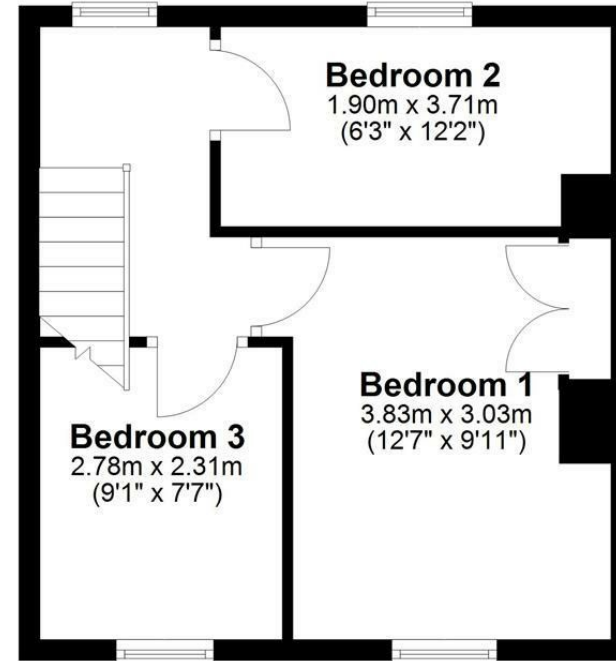
Ground Floor

Approx. 34.5 sq. metres (371.2 sq. feet)



First Floor

Approx. 31.7 sq. metres (340.9 sq. feet)



Total area: approx. 66.2 sq. metres (712.1 sq. feet)

Disclaimer: These particulars, whilst believed to be accurate are set out as a general outline only for guidance and do not constitute any part of an offer or contract. Intending purchasers should not rely on them as statements of representation of fact, but must satisfy themselves by inspection or otherwise as to their accuracy. No person in this firm's employment has the authority to make or give any representation or warranty in respect of the property. All measurements and distances are approximate only. Your home is at risk if you do not keep up repayments on a mortgage or other loan secured on it.